



WELCOME
TO PLACE YOUR BETS
SECURING LAS VEGAS'
WATER SUPPLY

David L. Johnson
Deputy General Manager
Engineering and Operations
Southern Nevada Water Authority



RESPONSIBILITIES



CONSERVATION

Incentives, Programs,
Regulation and Pricing



WATER SUPPLY PLANNING

Developing and managing
regional water supplies



WATER QUALITY

Maintaining and
protecting water quality



INFRASTRUCTURE

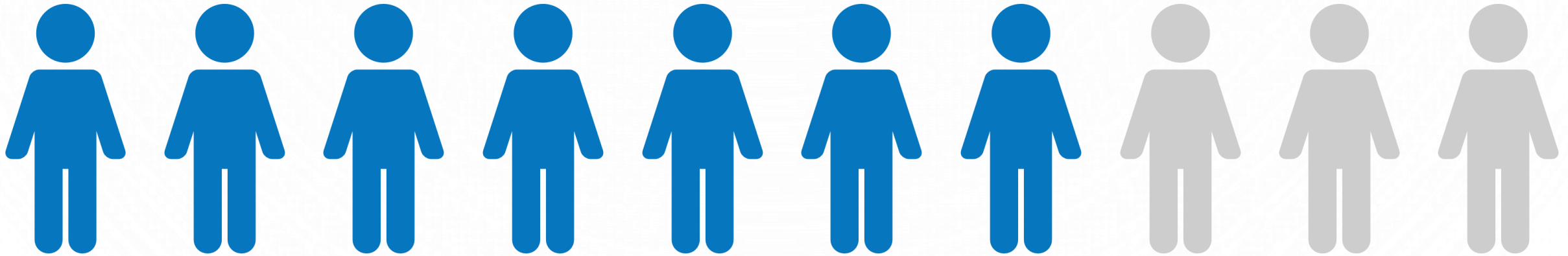
Building and operating
major facilities

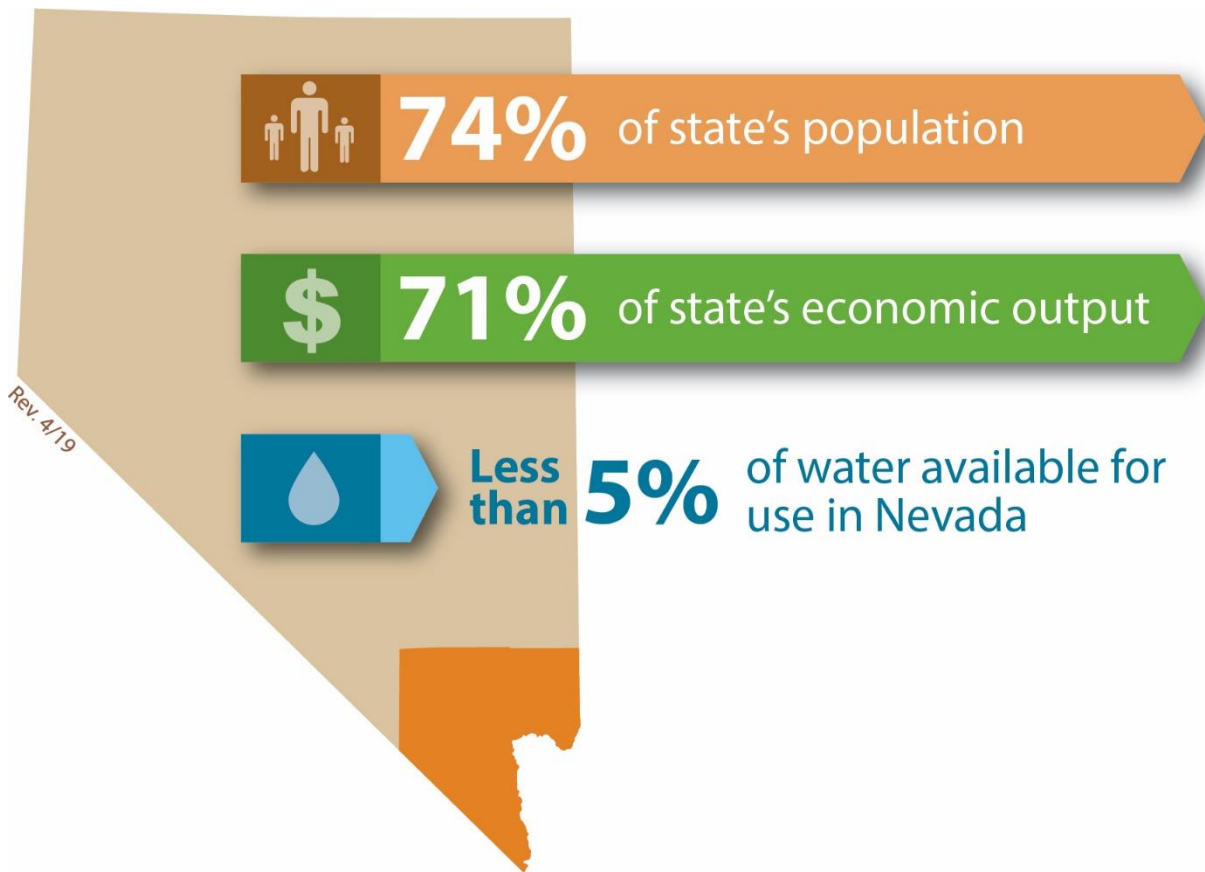


STEWARDSHIP

Protecting
environmental resources

**Seven of every 10 Nevadans rely on the SNWA
to supply water to homes and businesses.**

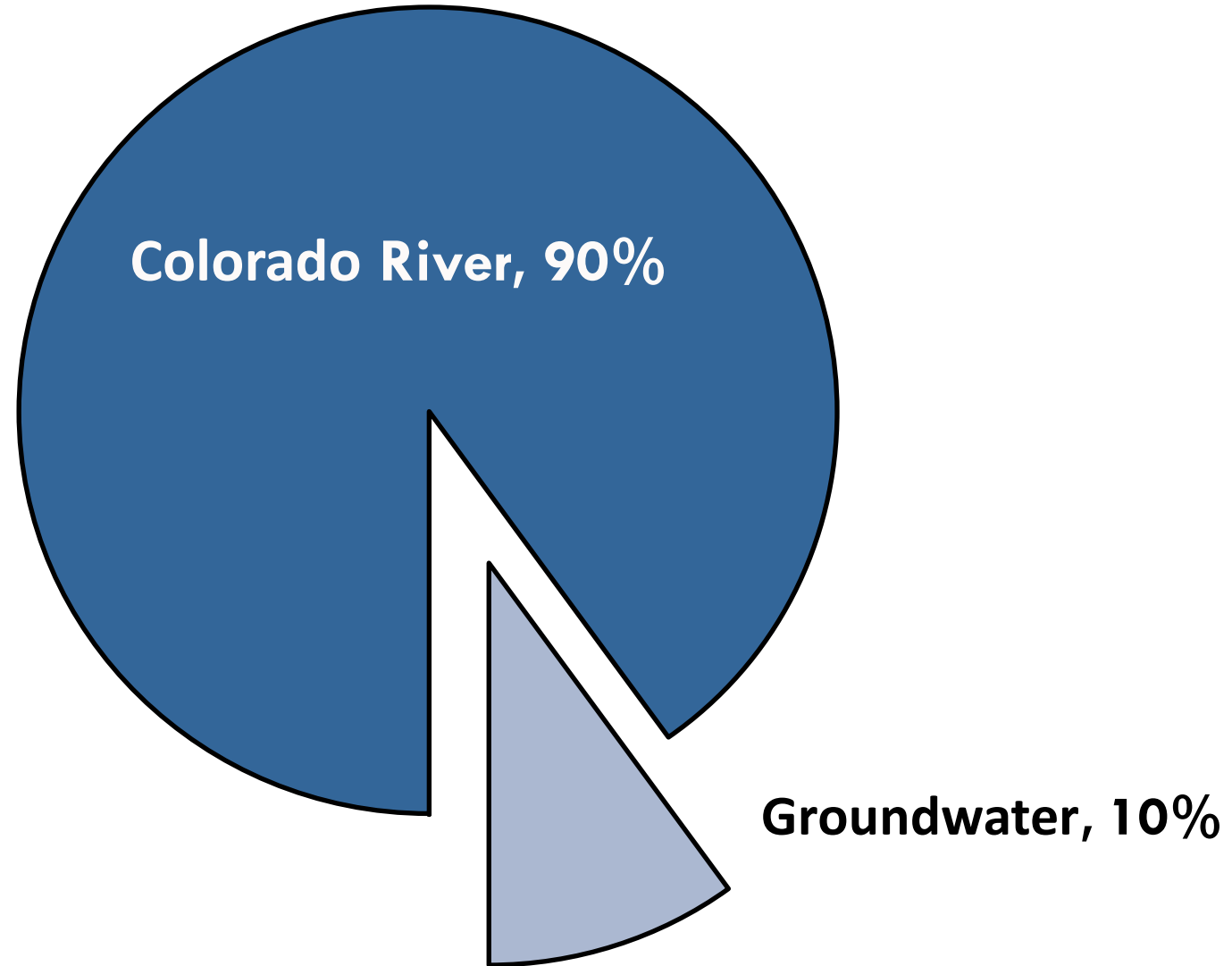




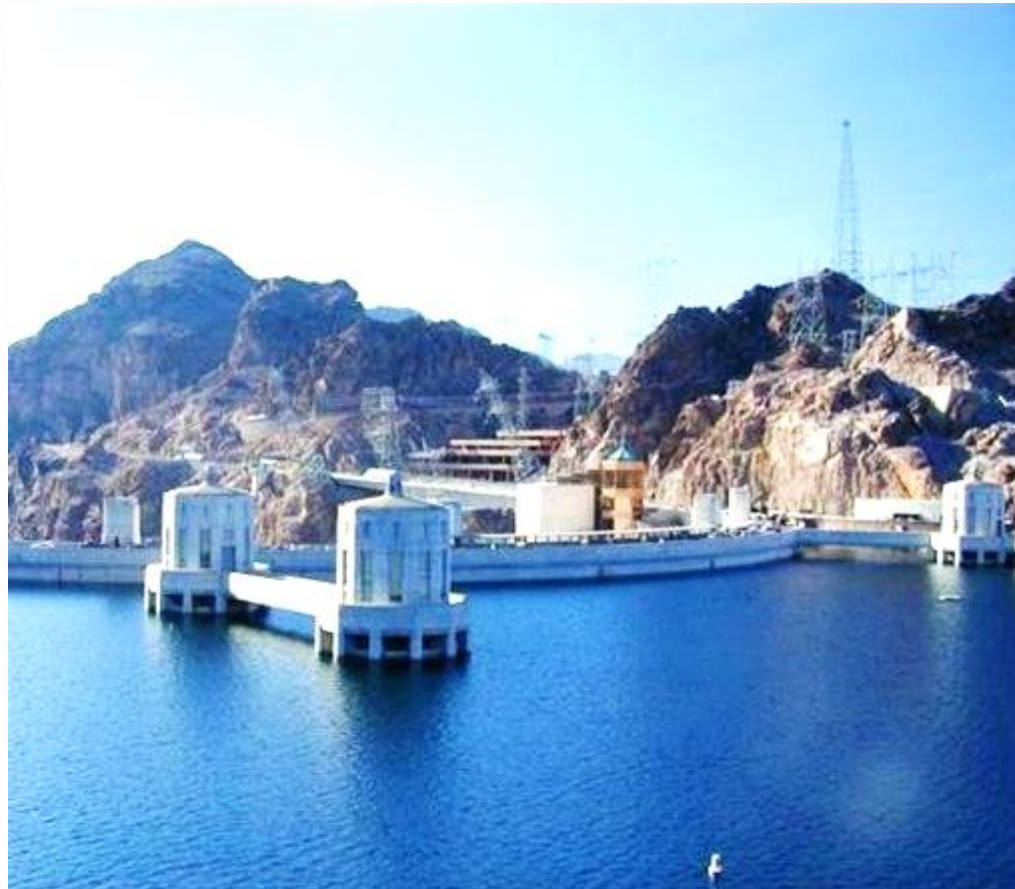
SOUTHERN NEVADA:

Big impact on economy,
little impact on state
water resources.

POTABLE WATER SUPPLIES



Since 2000, the Colorado River has been experiencing severe drought conditions, affecting Lake Mead's water levels.

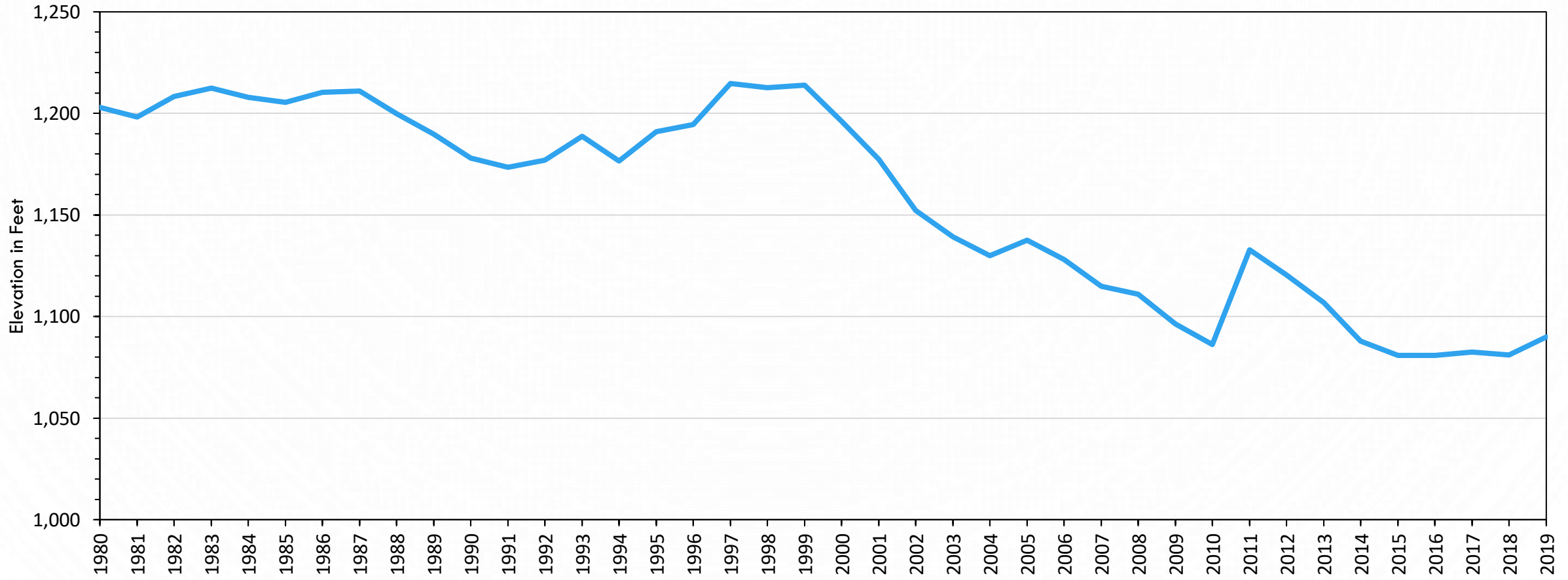


2000



2019

Since the drought began, Lake Mead levels have fallen more than 100 feet.

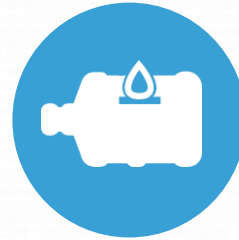


Southern Nevada has spent **decades** preparing for drought to ensure the reliability of water supplies for Southern Nevada



INFRASTRUCTURE

Constructing major facilities and asset management



WATER BANKING

Storing water supplies for the future



CONSERVATION

Incentives, programs, regulation & pricing

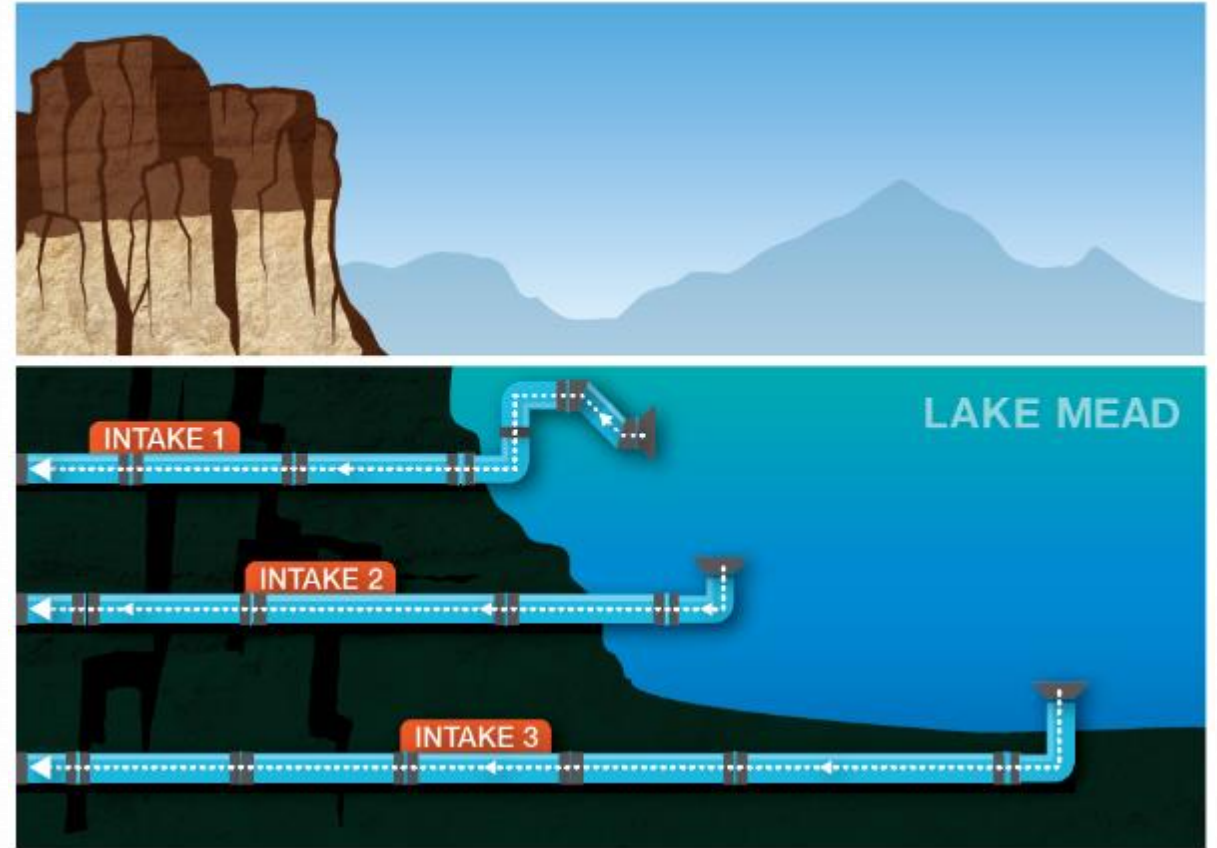


RESOURCE PLANNING

Working with partners & developing comprehensive plans to manage supplies

INFRASTRUCTURE

In 2005, planning was initiated to protect and improve Southern Nevada's infrastructure amid declining lake levels.



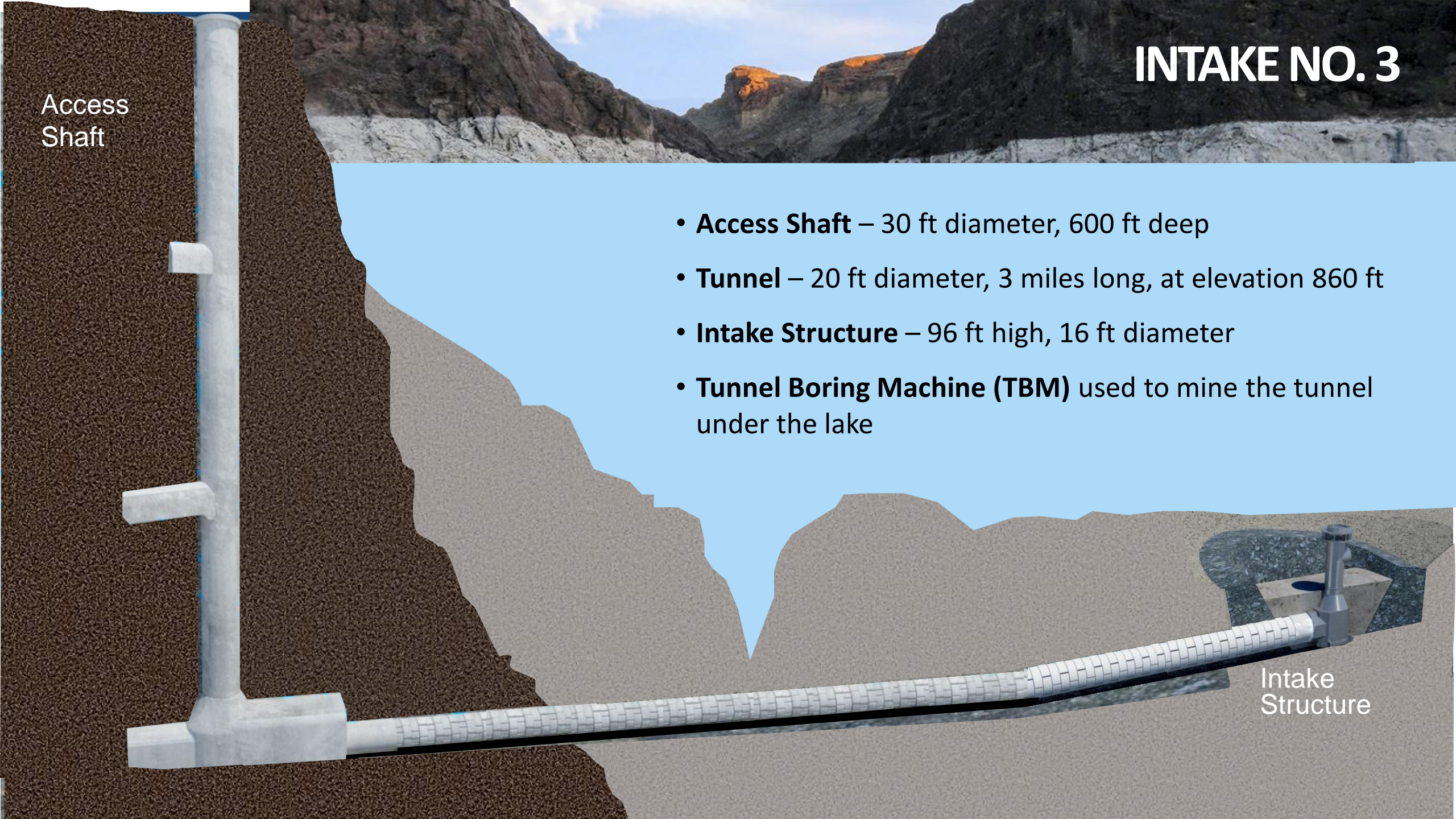
Lake Mead Intake Profile

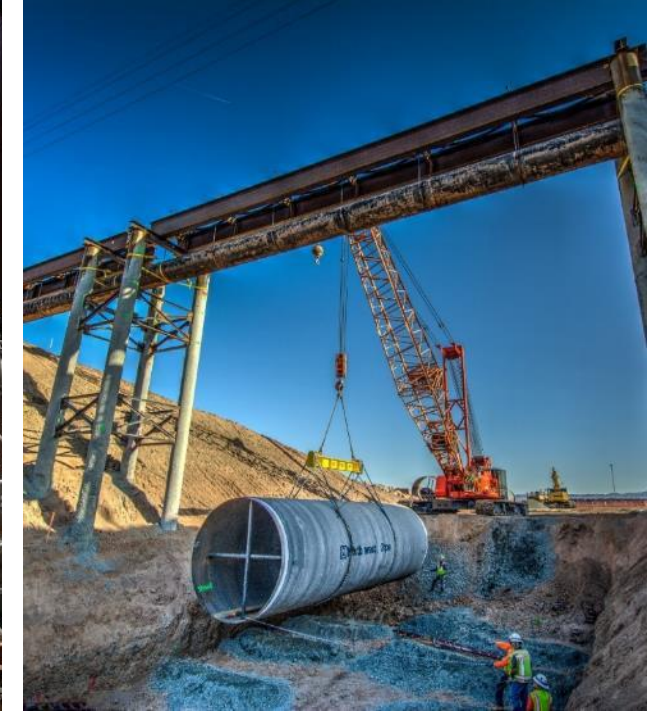
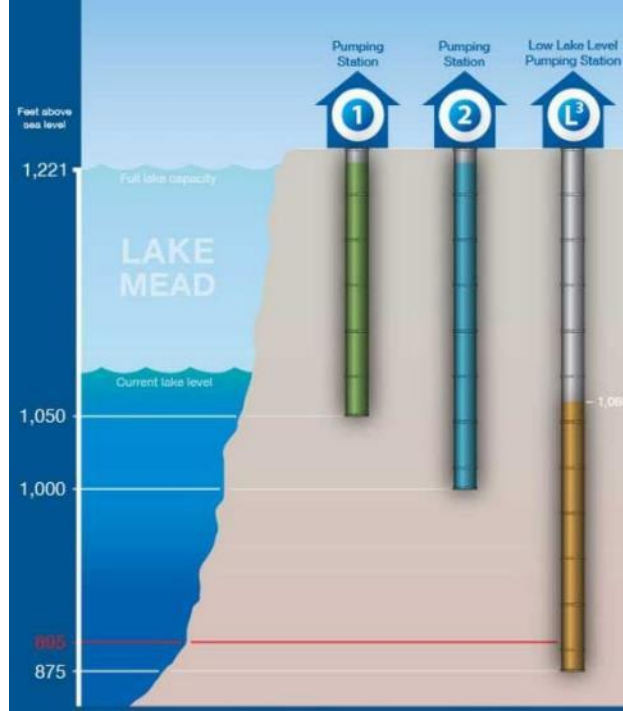
INTAKE NO. 3

Access Shaft

- **Access Shaft** – 30 ft diameter, 600 ft deep
- **Tunnel** – 20 ft diameter, 3 miles long, at elevation 860 ft
- **Intake Structure** – 96 ft high, 16 ft diameter
- **Tunnel Boring Machine (TBM)** used to mine the tunnel under the lake

Intake Structure



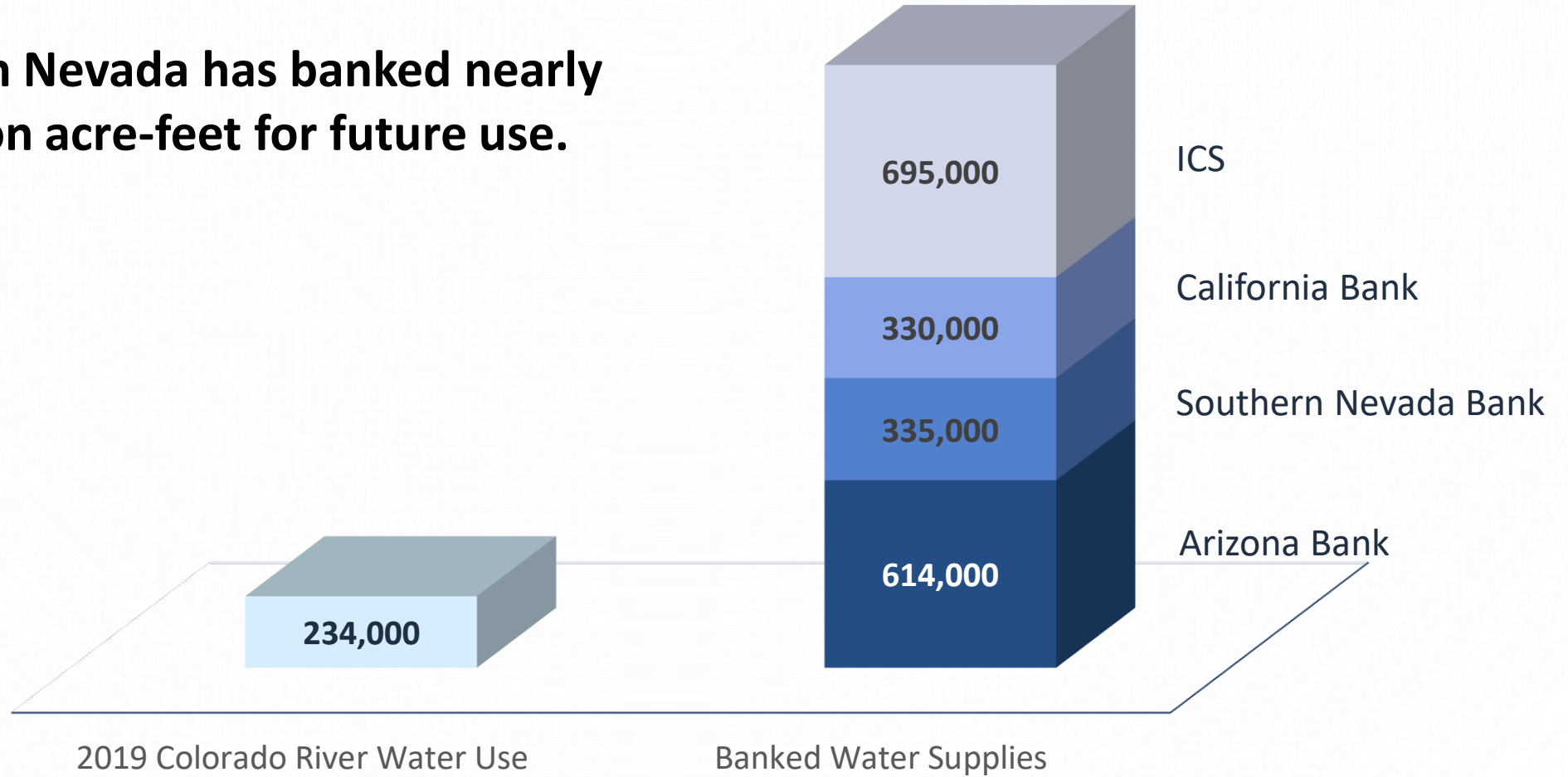


Low Lake Level Pumping Station

- The Low Lake Level Pumping Station is under construction near Lake Mead.
- When completed in 2020, the pumping station will ensure water deliveries even if elevations fall as low as 875 feet.
- \$650 million project

WATER BANKING

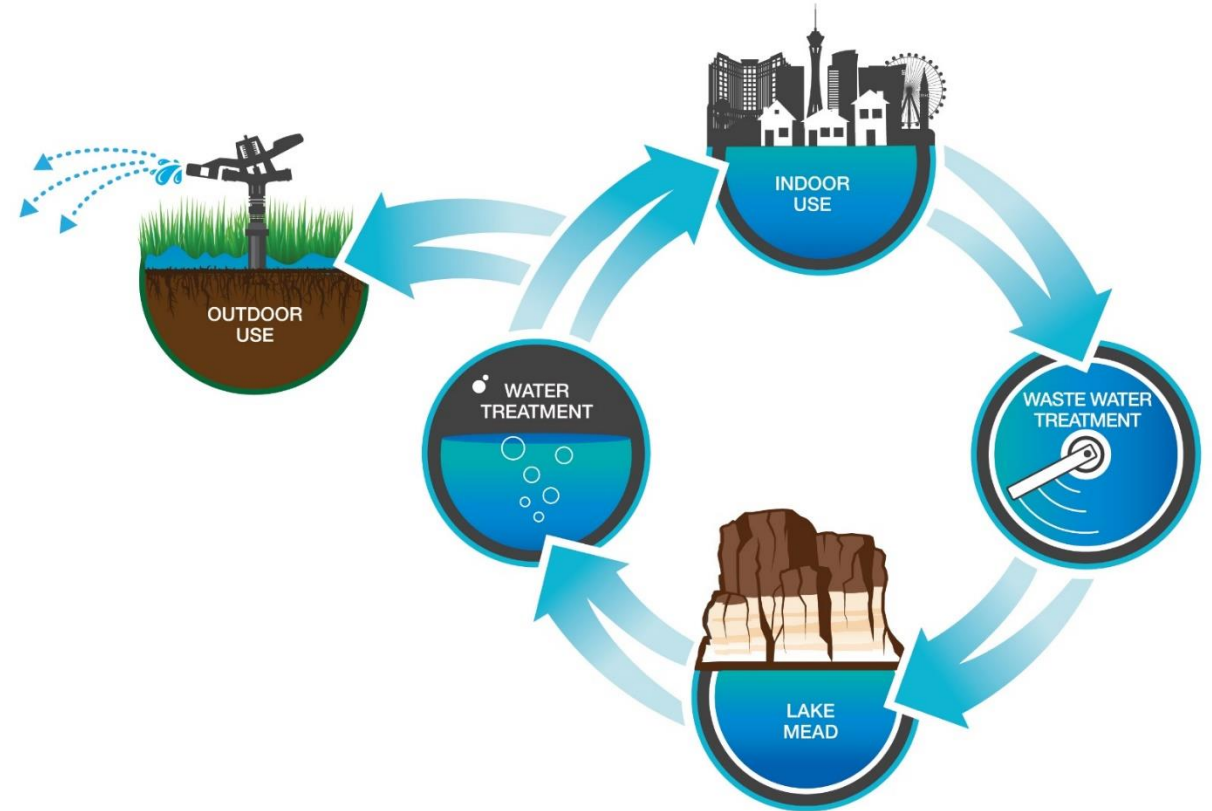
Southern Nevada has banked nearly 2 million acre-feet for future use.



RETURN FLOWS

Southern Nevada recycles 99% of water used indoors, thereby extending the availability of its resources.

The majority of SNWA's conservation programs aims to reduce outdoor, consumptive uses.

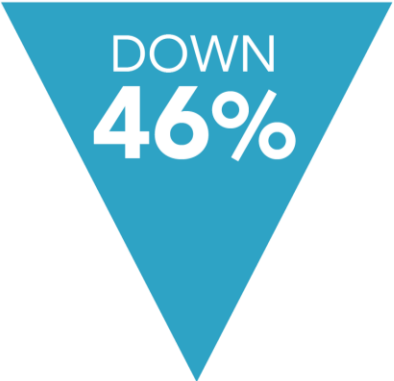


**Water use has declined significantly since 2002,
but continued conservation remains a priority.**

Southern Nevada
POPULATION



Per Capita
WATER USE



Colorado River Water
CONSUMPTION



Reducing consumptive water use remains a high priority.



Non-Functional Turf



Irrigation Compliance



Evaporative Cooling



New Development Standards/Reviews



Artificial Intelligence/ Smart Technologies

Historic & ongoing focus areas

Next generation efforts

- **SNWA is a member of the Colorado River Basin Salinity Control Forum**
 - Members Appointed by Governors of each Basin State
 - Works to achieve basin-wide salinity control consistent with Title II of the Colorado River Basin Salinity Control Act
 - Implements a program of salinity control to meet water-quality standards, mandated under the Clean Water Act, which have been developed by the Basin States and approved by EPA
- **Program Results:**
 - Salinity levels in the Lower Basin have been reduced by more than 100 mg/L
 - The Basin States and Federal government have been able to meet salinity standards and water-quality commitments
 - Hundreds of millions of dollars in reduced economic damages have been saved as a result of lower salinity levels



SOUTHERN NEVADA WATER AUTHORITY™

