

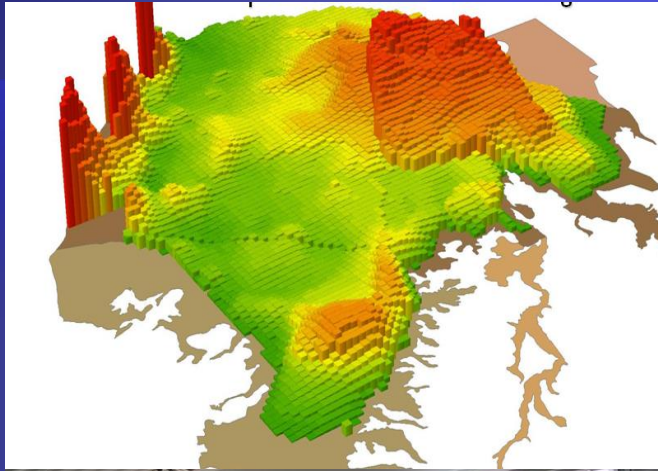
# A Watershed Approach-

## Watershed Strategies Session





# Over 30 years of Salt Management in Santa Ana River Watershed



# Watershed Level Thinking





# Watershed Approach – Management Strategies

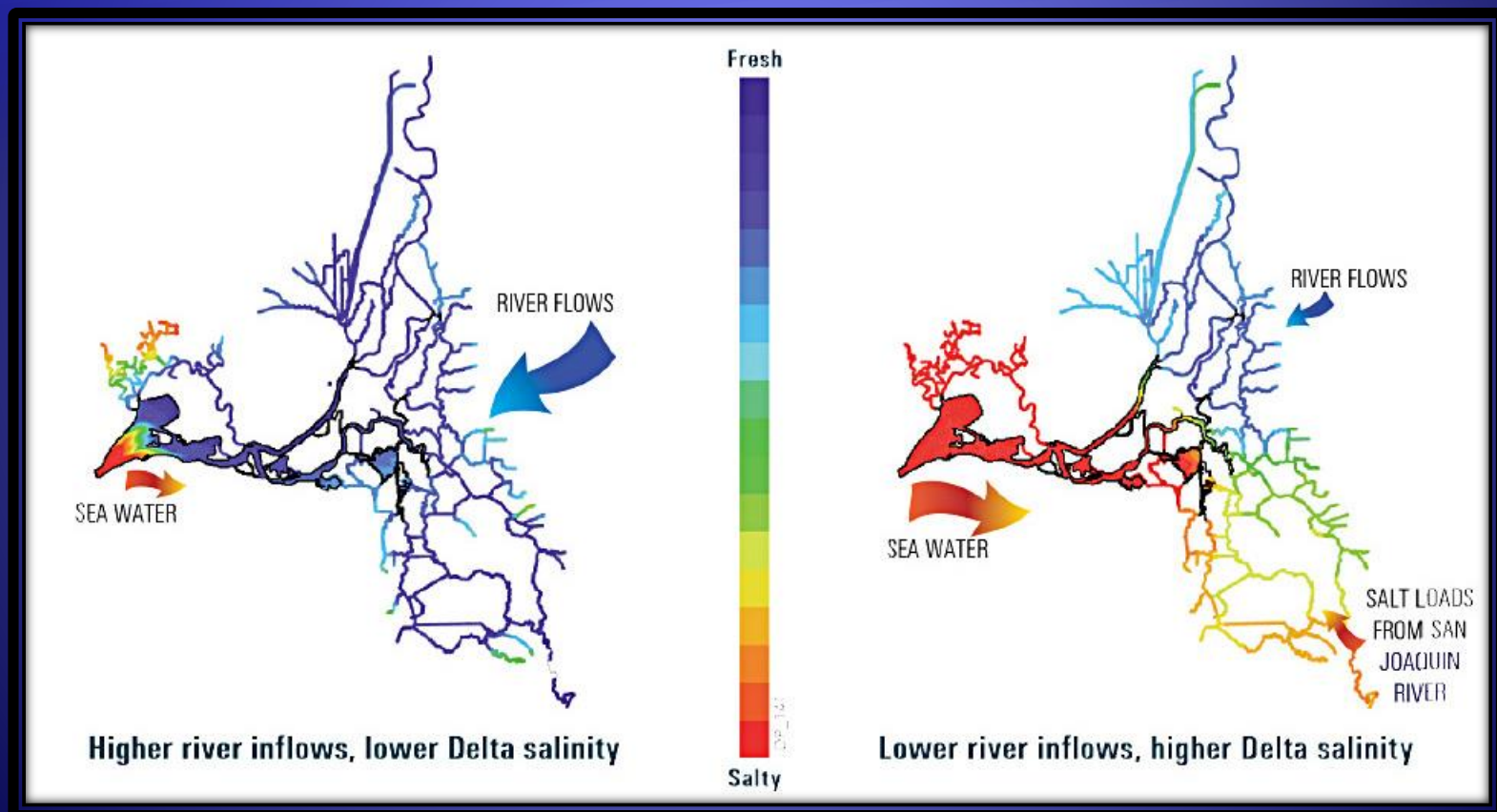


# The New Normal





# Drought can impact local water recycling agencies due to less lower TDS State Project Water

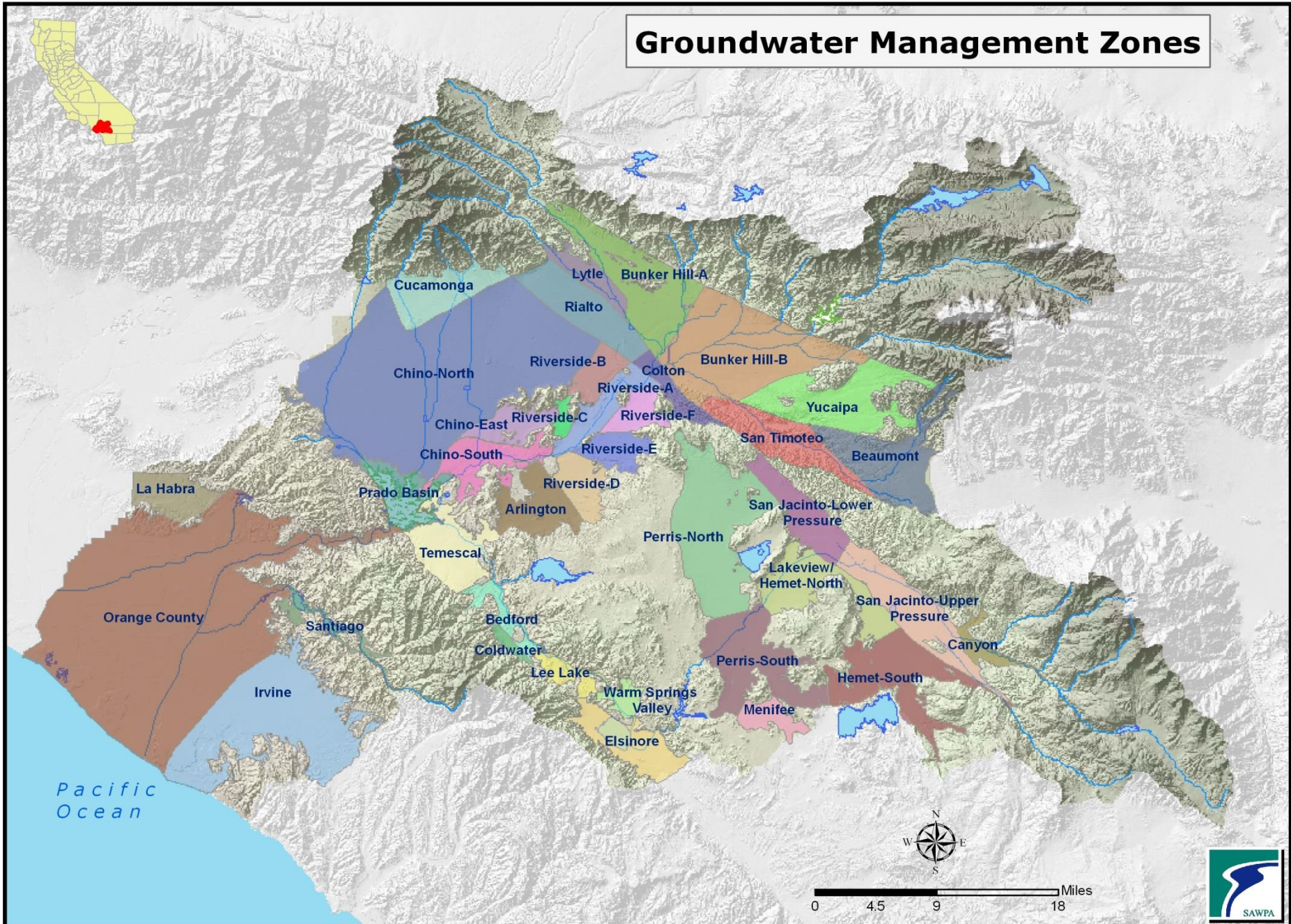


**Wastewater treatment plants now have little margin of error in complying with TDS permit limits. Compliance may become even more costly.**





# Groundwater Management Zones





# SAWPA and Southern CA Salinity Coalition are working together to investigate salinity trends

## SCSC Past Work

- ◆ Salinity and Water Softener Fact Sheet
- ◆ Salt-less Softener Technologies
- ◆ Salinity Management Guide (WateReuse)
- ◆ Regional Brine-Concentrate Management Study with Bureau of Reclamation

## SCSC Current Work

- ◆ SCSC held workshop on drought impacts on water quality and salinity
- ◆ SCSC hired consultants to conduct salinity trend analysis from drought

