

# Salinity Regulatory Climate and System Impacts

Pamela Creedon, PE – Executive Officer

Karl Longley, ScD, PE – Chair

Central Valley Regional Water Quality Control Board

California Environmental Protection Agency

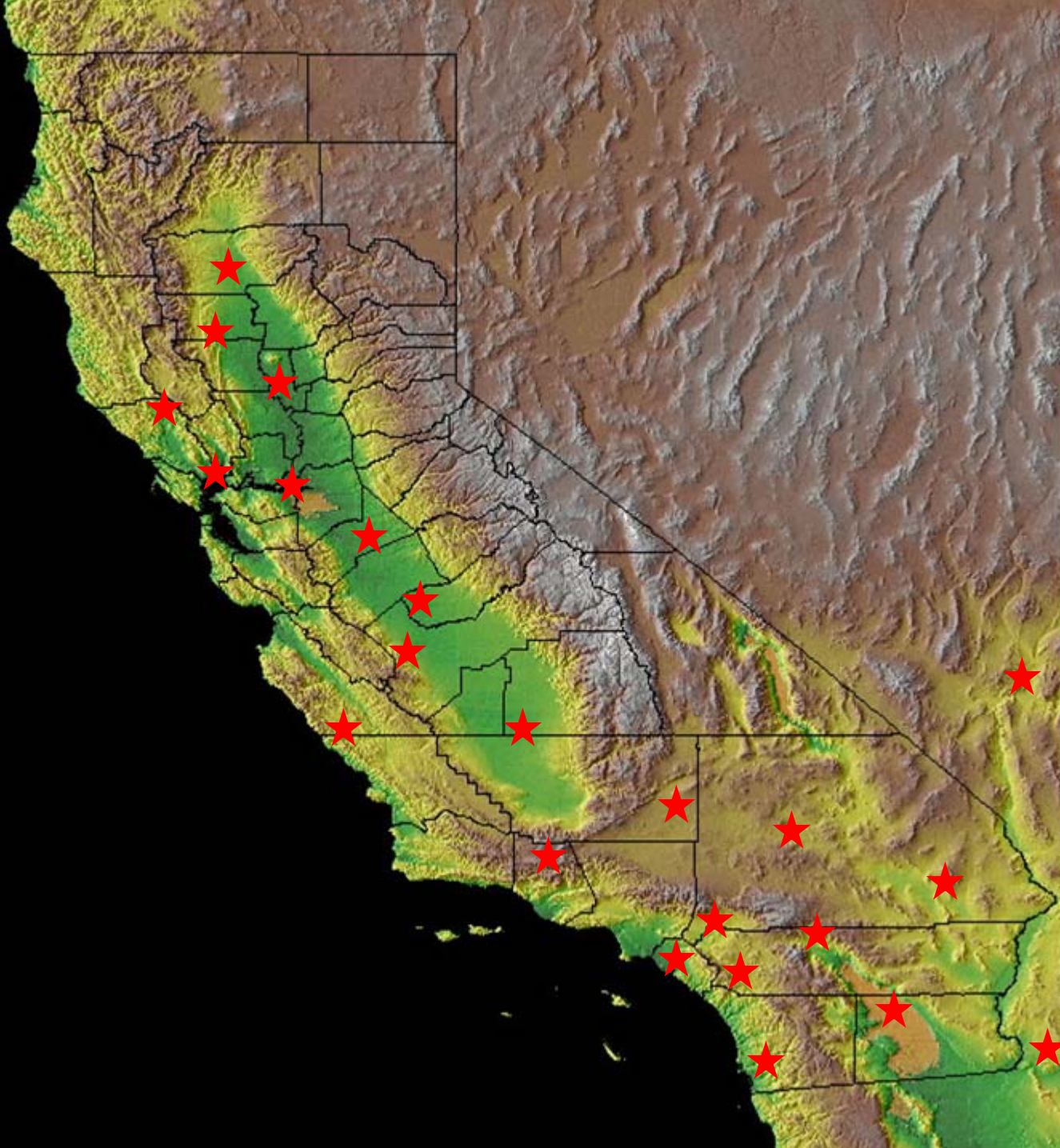


January 18, 2008

**Multi-State Salinity Coalition**

**2008 Annual Salinity Summit**

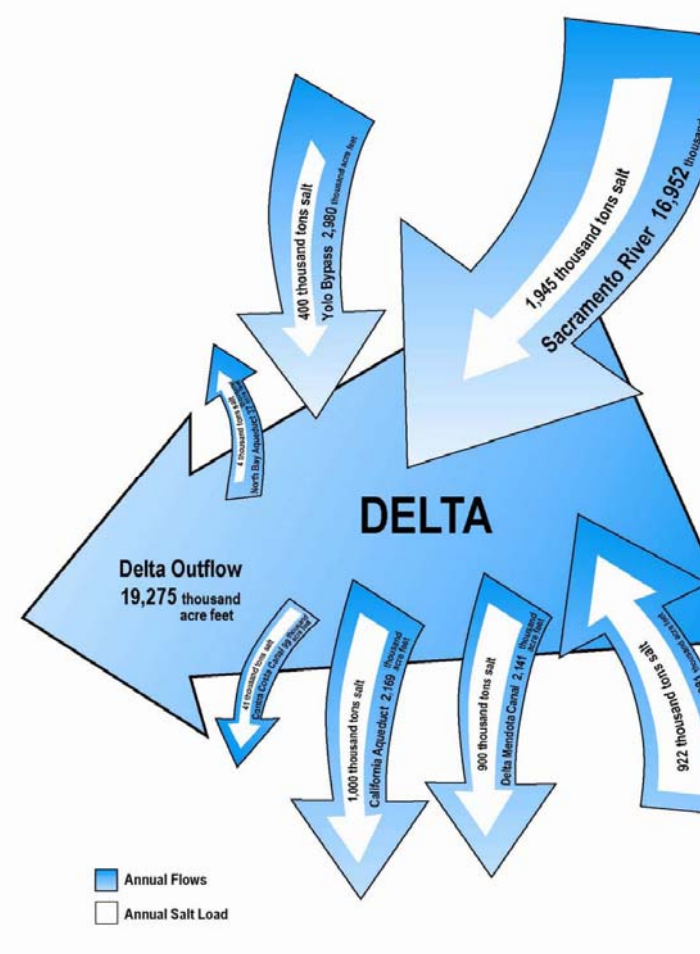
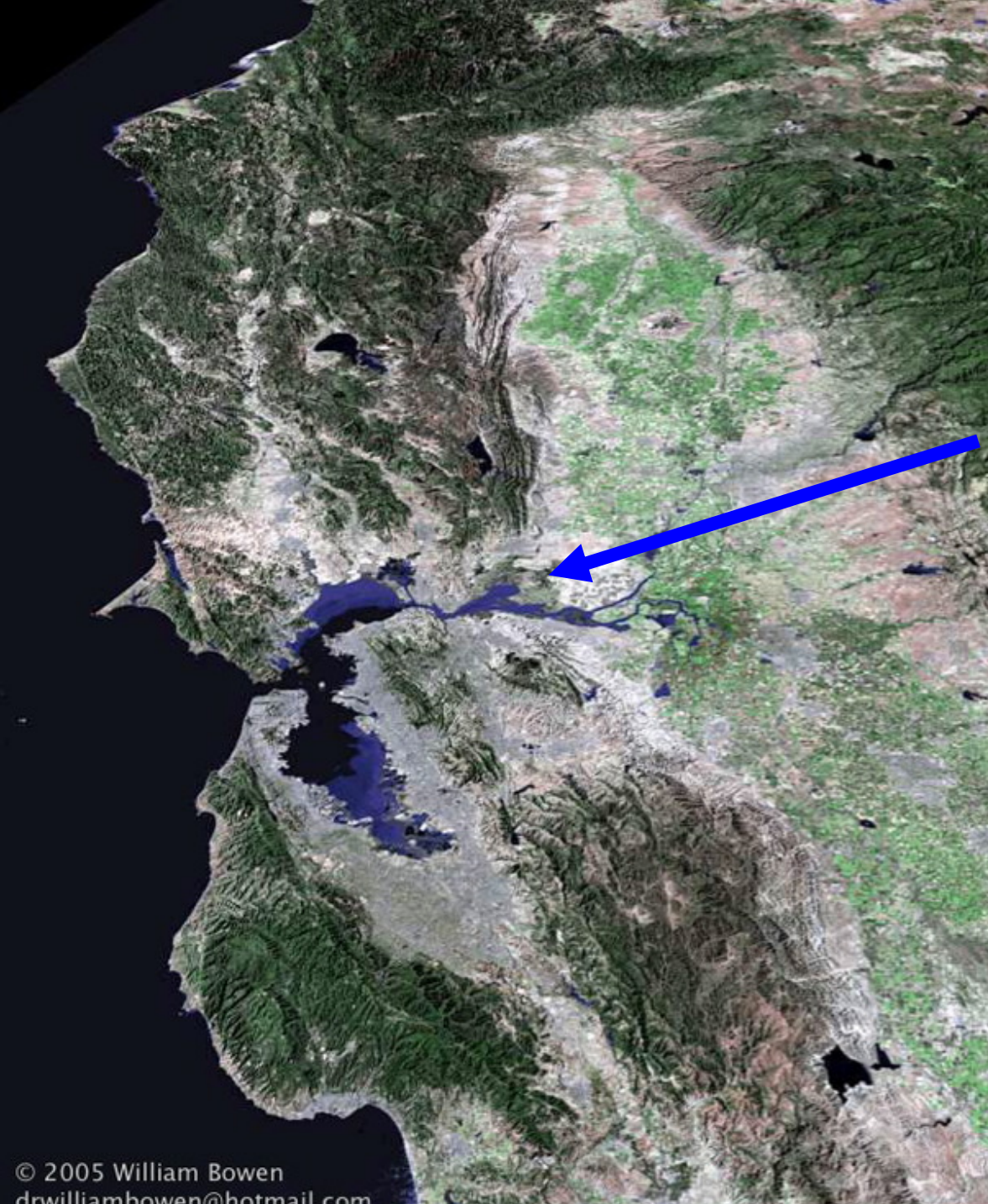
# Statewide SALT Issues

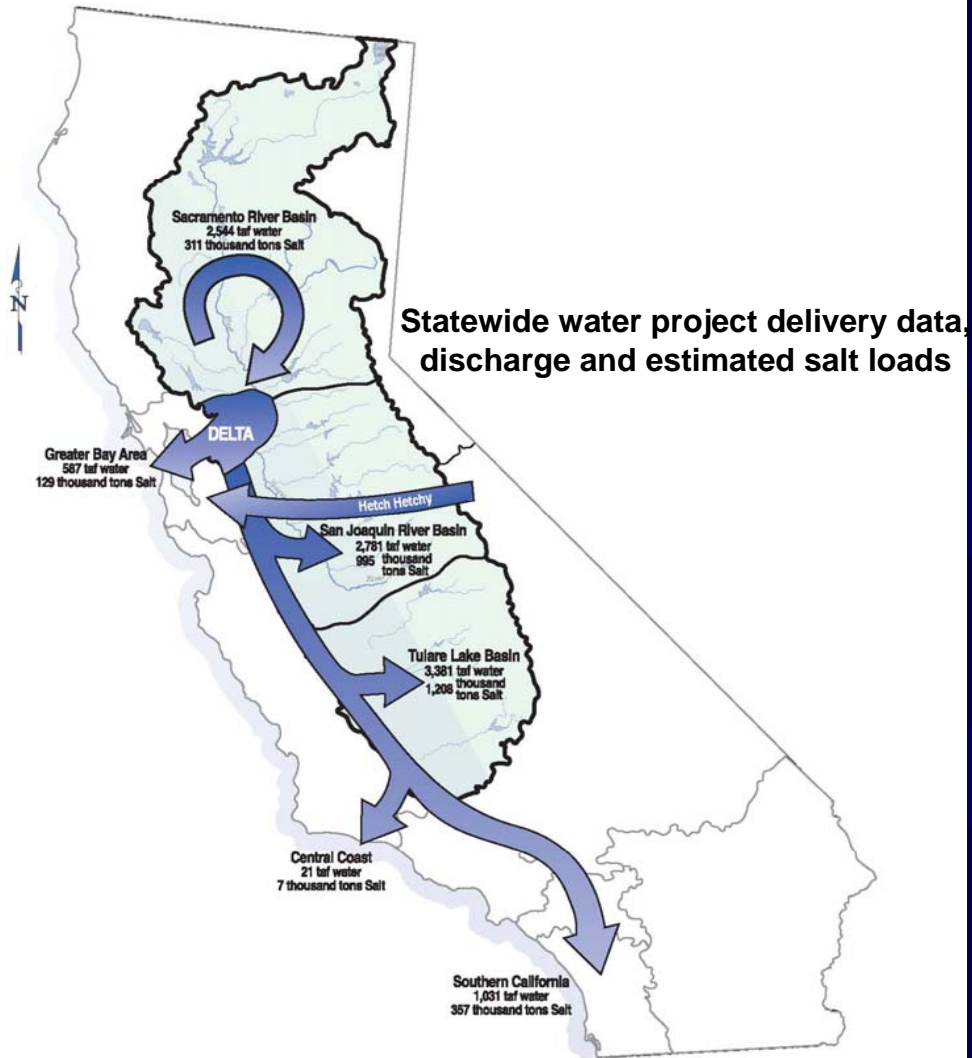




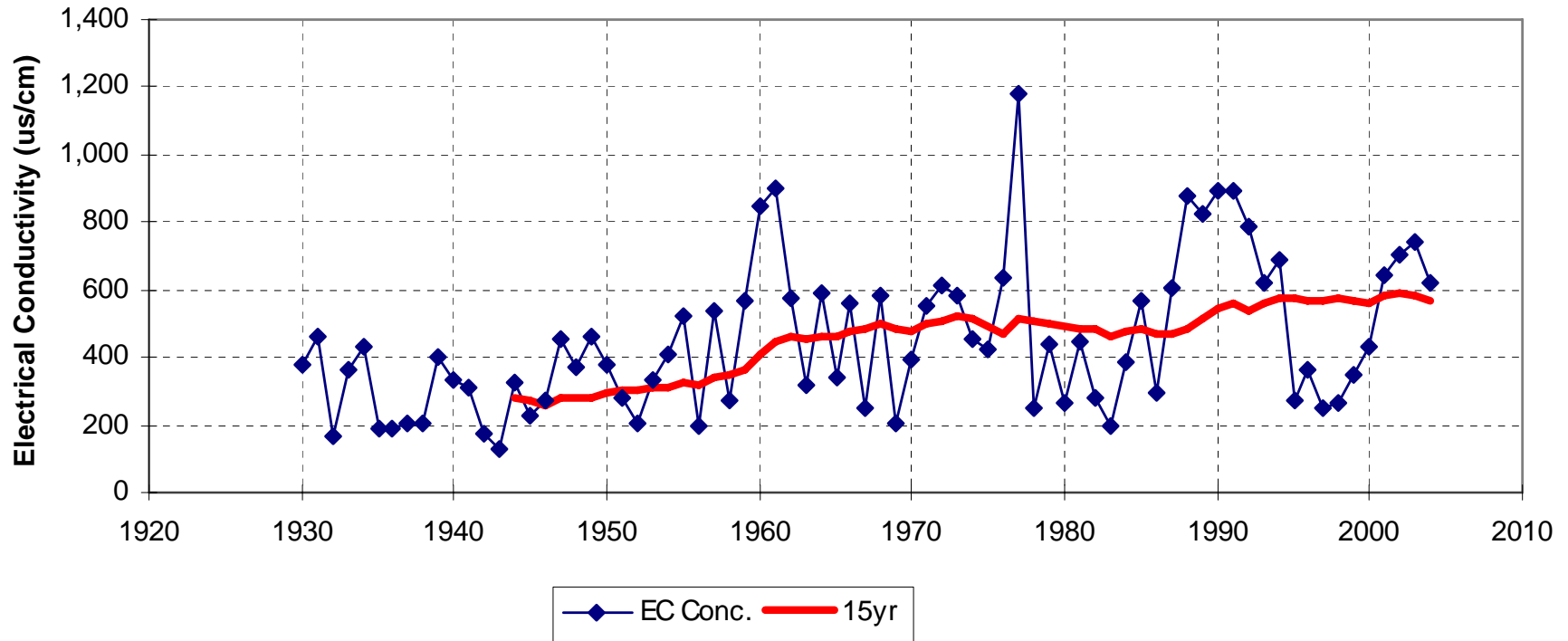
**Multi-State Salinity Coalition  
2008 Annual Salinity Summit**

January 18, 2008





## SJR at Vernalis Mean Annual EC



## Salinity trends in the San Joaquin River near Vernalis

Multi-State Salinity Coalition

2008 Annual Salinity Summit

January 18, 2008

Source: CA WaterBoards



Surface Water Salt Inflow/Outflow (railroad cars per day)  
Westside of San Joaquin Valley

# Sources of Salinity

- **Bay-Delta**
- **Wetlands**
- **Other Habitat**
- **Irrigated agriculture**
- **Dairy industry**
- **Food Processors**
- **Other Industry**
- **Municipal WWTP's**
- **Drinking water suppliers**
- **People**
- **Others**

# Role of the Central Valley Regional Water Quality Control Board

- **Protect beneficial uses of surface and ground waters**
- **Actively regulate salinity**
  - **Policies and plans**
  - **Waste discharge requirements, permits, waivers and other orders issued by the Board**

# Regulatory Strategy

- Develop and adopt a formal salinity policy and plan
- Regulate salinity to maximum extent possible during policy development
  - Implementing Existing Policies
  - Management Guidance Memo

# Regulatory Philosophy

- Any salinity above background discharged to land or water increases the “inventory” of salt in the Region.
- We need to deal with salt as quickly as reasonably as we can while we develop the new salt policy.

# Salinity Policy: The Vision

- **To successfully develop and implement a viable salinity management plan for California's Central Valley**
  - **Sustain the Valley's lifestyle**
  - **Support regional economic growth**
  - **Retain a world-class agricultural economy**
  - **Maintain a reliable, high-quality drinking water supplies**
  - **Protect & enhance our local environment**

# Guidance Memo Central Premise

- Effective
- Consistent
- Clear
- Broadly Applicable

# Permitting Strategy

- Numeric effluent limits
- Salinity minimization
- Anti-degradation analysis
- Time schedules for effluent limits

# Expectation of Permittees

- **Conduct source control and prevention studies**
- **Implement measures to control, reduce and eliminate salinity in discharges in accordance with requirements established by the Board**
- **Actively support and provide resources (time and funding) to the development and implementation of the long-term Salinity Policy**

# Summary

- Regional Board will consistently consider potential salinity impacts and affected beneficial uses when drafting or updating all WDRs & permits.
- Regional Board is committed to motivate dischargers to take every opportunity to implement salinity control measures.
- Some salinity problems can only be remedied by a long-term commitment to a solution process.

# Thank You



<http://www.waterboards.ca.gov/centralvalley>

January 18, 2008

**Multi-State Salinity Coalition  
2008 Annual Salinity Summit**